

2-Way threaded ball valve, article SL440-VA with lever

Diameter G 1/2" up to G 3"

Threaded ball valve series "SLIM-Line", functional execution, designed for general, simple purposes. Two-part screwed stainless steel body with full bore. Stem anti blow-out, mounted from inside. Shaft seal with self-adjusting multilayer PTFE packing rings means by belleville washer and additional FKM O-Ring

Applicable for gaseous and liquid media (no steam) under observe of the material resistance stainless steel AISI 316.

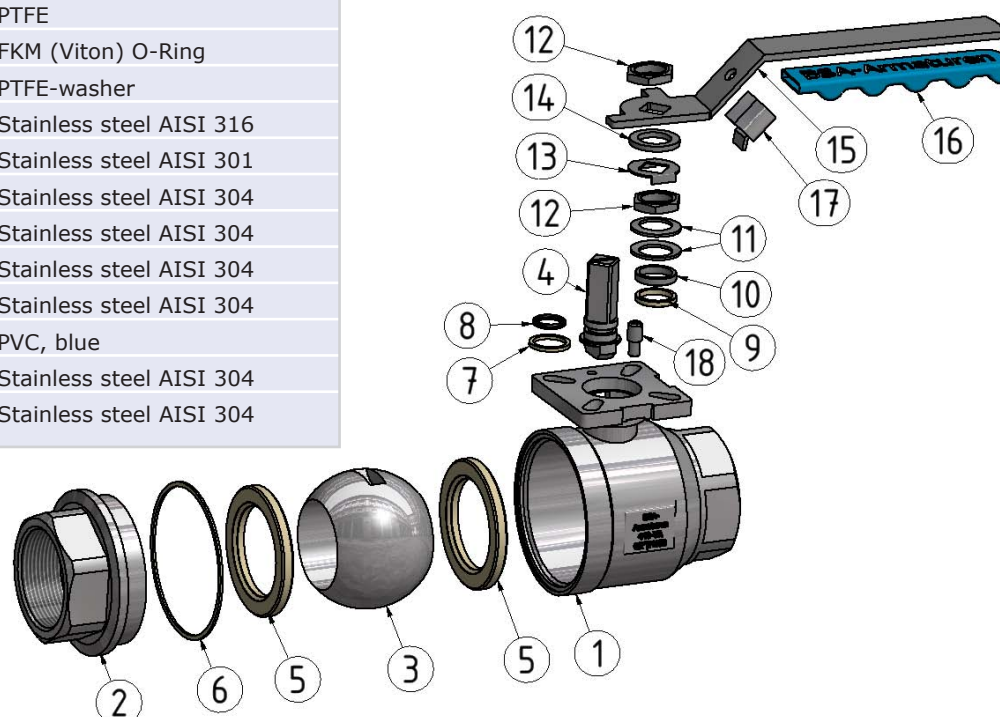
- ☞ **With femal thread on both sides according to ISO 228-1 (BSP cylindrical)**
- ☞ **Actuator mounting flange (topflange) according ISO 5211**
- ☞ **Lever with locking devise in OPEN and CLOSED Position, with hole for U-lock or head bolt. PVC-sleeve with ergonomic PVC-Grip shape.**



	with mechanical lever lock and bore for U-lock
	DGRL/PED 2016/68/EU AD 2000, W0
	ATEX EX II2 GD c T2
	Ambient: -20° C ... +80° C
	Medium: -25° C ... +180° C

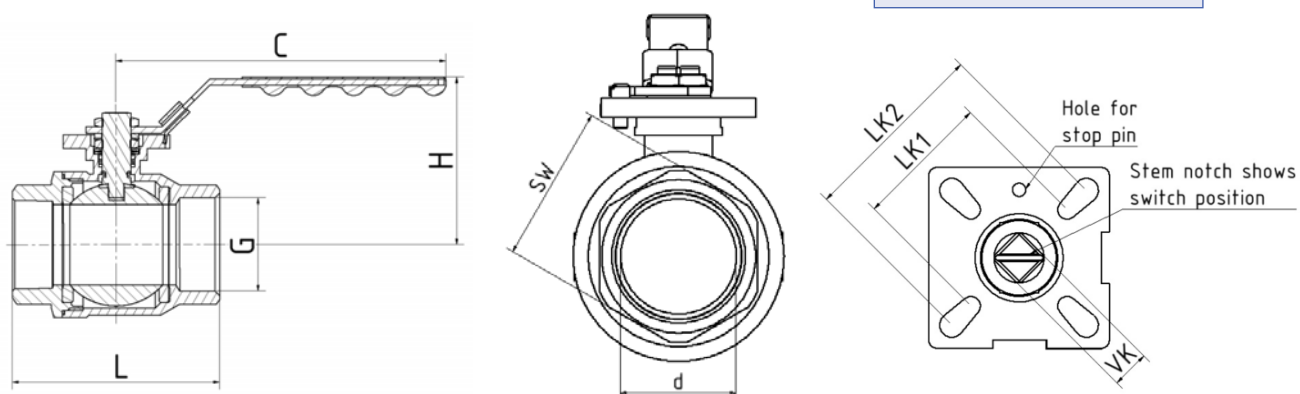
Pos.	Description	Material
1	Body	Stainless steel A351 CF8M
2	Screw in part	Stainless steel A351 CF8M
3	Ball	Stainless steel AISI 316
4	Shaft	Stainless steel AISI 316
5	Ball seal	RPTFE (15%-glass)
6	Body seal	PTFE
7	Slide ring	PTFE
8	Shaft seal	FKM (Viton) O-Ring
9	Shaft packing set	PTFE-washer
10	Pressure Ring	Stainless steel AISI 316
11	Belleville washer	Stainless steel AISI 301
12	Shaft nut	Stainless steel AISI 304
13	Nut stopper	Stainless steel AISI 304
14	Plate washer	Stainless steel AISI 304
15	Lever	Stainless steel AISI 304
16	Lever sleeve	PVC, blue
17	Locking device	Stainless steel AISI 304
18	Stop pin	Stainless steel AISI 304

- Design standard DIN EN 12516-1
- Body strenght DIN EN 12516-2
- Design pressure PN 63
- Marking EN 19, MSS SP-25
- Examination / test DIN EN 12266 P10 / P11 / P12



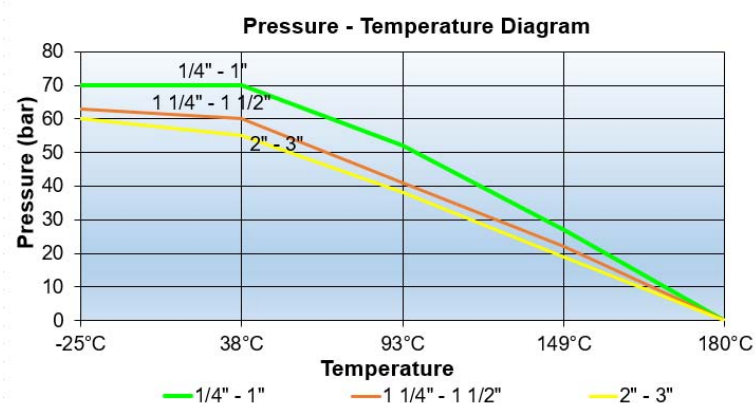
2-Way threaded ball valve, article SL440-VA with lever

Diameter G 1/2" up to G 3"



	Article-No.										
Diameter	SL 440-VA female thread ISO 228	L (mm)	d (mm)	H (mm)	C (mm)	SW (mm)	LK1 (mm)	LK2 (mm)	VK (mm)	Design Pressure max. (bar)	Weight (kg)
G 1/2"	502.3976.6.63	57,0	15,0	65,0	117,0	26	36,0	42,0	9,0	63	0,37
G 3/4"	502.3976.6.65	64,0	20,0	70,0	117,0	32	36,0	42,0	9,0	63	0,49
G 1"	502.3976.6.67	77,0	25,0	75,0	134,0	38	42,0	50,0	11,0	63	0,74
G 1 1/4"	502.3976.6.68	90,0	32,0	85,0	134,0	48	42,0	50,0	11,0	63	1,18
G 1 1/2"	502.3976.6.69	105,0	38,0	95,0	203,0	55	50,0	70,0	14,0	63	1,94
G 2"	502.3976.6.71	125,0	50,0	105,0	203,0	67	50,0	70,0	14,0	63	2,90
G 2 1/2"	502.3976.6.72	153,0	65,0	140,0	255,0	85	70,0	102,0	17,0	63	5,77
G 3"	502.3976.6.73	172,0	76,0	145,0	255,0	100	70,0	102,0	17,0	63	8,45

Diameter	1/2"	3/4"	1"	1 1/4"	1 1/2"	2"	2 1/2"	3"
ball bore Ø	15,0	20,0	25,0	32,0	40,0	50,0	65,0	76,0
KV-value (m³/h)	15,48	30,96	41,28	79,98	124,70	178,02	387,00	642,30



2-Way threaded ball valve, article SL440-VA

Diameter G 1/2" up to G 3"



Locking with
U-Padlock



Locking with head
bolt and split pin



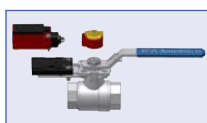
Stem extension, article 498-VL length +/- 100.0 mm (e.g. for insulation purposes)
Completely made of stainless steel including stop in OPEN / CLOSED position, T-handle
can be moved. The name plate of the valve is transferred to the extension shaft.

Art.-No. 498.9602.5.F__/_	04/9	05/11	07/14	10/17
Diameter of ball valve	1/2" - 3/4"	1" - 1 1/4"	1 1/2" - 2"	2 1/2" - 3"

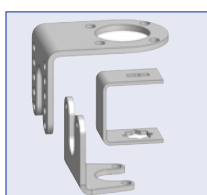
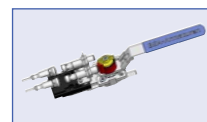


Spindle extension, article 22-IVL length +/- 100.0 mm
(e.g. for insulation purposes) completely made of stainless
steel. Mounting flange for actuators according to ISO 5211
(F04 / F05 / F07 / F10)

Art.-No. 22.7240.6.F__/_	04/9	05/11	07/14	10/17
Diameter of ball valve	1/2" - 3/4"	1" - 1 1/4"	1 1/2" - 2"	2 1/2" - 3"



Open mounted mechanical limit switches and proximity switches
Consists of a mounting plate (stainless steel) to accommodate me-
chan. limit switches or proximity switches. Fixing of the mounting
plate at the ISO 5211 top flange of the valve. The operating cam or
puck is screwed to the valve stem.
Either single feedback (OPEN or CLOSE)
or both (OPEN and CLOSE)



VMM

**Mounting kit VMM for direct assembly of limit switch boxes
on ball valves with ISO 5211 top flange plate**

Art.-No. 22.7240.6.F__	04VMM	05VMM	07VMM	10VMM
Diameter of ball valve	1/2" - 3/4"	1" - 1 1/4"	1 1/2" - 2"	2 1/2" - 3"

