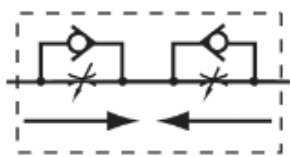
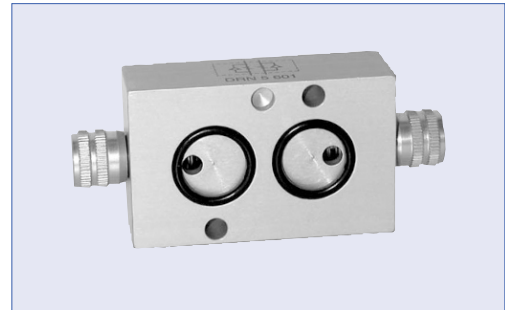
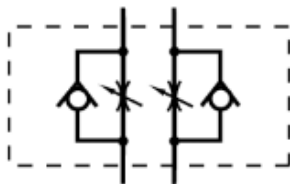


## NAMUR throttle plate, article DRN

Throttle check plate for the independent, stepless and accurate control of the operating times of pneumatic actuators in the direction "OPEN" and "CLOSE".  
 With a thumbscrew gets the cross-section bore from the inflow or outflow air quantity changes.  
 On both sides with NAMUR connection diagram will be mounted between pneumatic actuator and solenoid valve.



pneumatic actuator -**single acting-**  
**(3/2-way solenoid valves)**



pneumatic actuator -**double acting-**  
**(5/2-way solenoid valves)**

<b>size</b>	5,0 mm
<b>working pressure</b>	0,5 ... 10,0 bar
<b>temperature range</b>	-20° C up to +70° C
<b>materials</b>	Housing Aluminum anodised, other metal parts brass and stainless steel, seals NBR

design	order-number
for 3/2 way solenoid valves	457.8630
for 5/2 way solenoid valves	457.8629

