

2-Wege Muffen-Kugelhahn "Slim Line"

Artikel 415-MS G 1/4" bis G 4"

Artikel 415-MS I/A G 1/4" bis G 2"

Muffen-Kugelhahn mit vollem Durchgang für die allgemeine, einfache industrielle Verwendung. Einsetzbar für neutrale, gasförmige und flüssige Medien (kein Dampf)

- Gewinde gemäß ISO 228-1
- Gehäuse außen vernickelt

Standardmäßig erhältlich in zwei Ausführungs-Varianten:

- beidseitig Innengewinde
- Innen-/Außengewinde (zylindrisch)

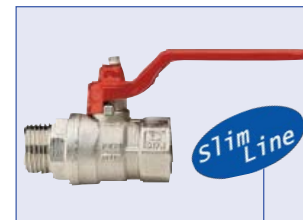
Optional: bis zur Größe G 1" auch wahlweise Betätigung mittels Flügelgriff



Artikel 415-MS



Artikel 415-MS/FG

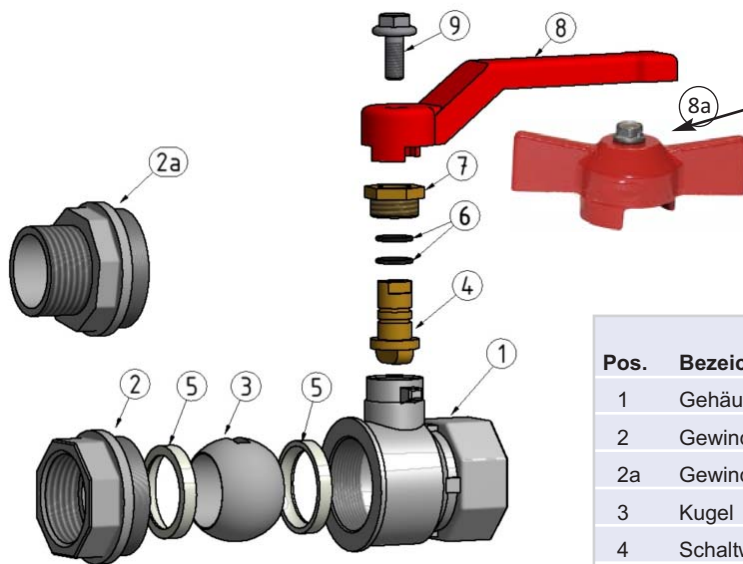


Artikel 415-MS I/A

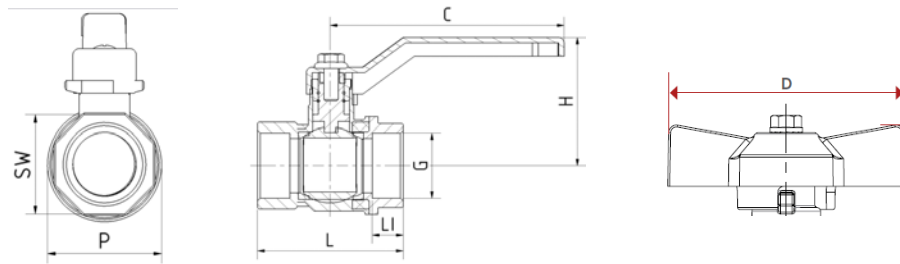


Artikel 415-MS I/A-FG

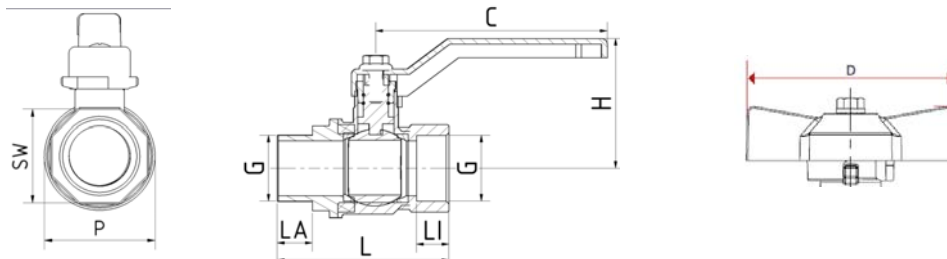
| | |
|--|----------------------------|
| | Umgebung -10° C ... +60° C |
| | Medium -20° C ... +150° C |



| Pos. | Bezeichnung | Werkstoff |
|------|-------------------|--------------------------------------|
| 1 | Gehäuse | Messing CW 617N vernickelt |
| 2 | Gewindeende | Messing CW 617N vernickelt |
| 2a | Gewindeende (I/A) | Messing CW 617N vernickelt |
| 3 | Kugel | Messing CW 617N verchromt |
| 4 | Schaltwelle | Messing CW 614N |
| 5 | Kugeldichtung | PTFE-Profilshalen |
| 6 | Wellendichtung | 2 x O-Ring VITON / NBR |
| 7 | Druckschraube | Messing |
| 8 | Handhebel | Stahl Fe.P.04 verzinkt, rot lackiert |
| 8a | Flügelgriff | Stahl Fe.P.04 verzinkt, rot lackiert |
| 9 | Hebelschraube | Stahl Fe CB4 verzinkt |



| Nennweite | Artikel-Nr. | | Abmessungen / Gewichte | | | | | | | | |
|-----------|--------------|-----------------|------------------------|---------|--------|--------|---------|--------|--------|-----------------------|--------------|
| | Handhebel | Flügelgriff | L (mm) | LI (mm) | H (mm) | C (mm) | SW (mm) | P (mm) | D (mm) | Druckstufe max. (bar) | Gewicht (kg) |
| G 1/4" | 26.3965.0.61 | 26.3965.0.61-FG | 44,4 | 10 | 37,0 | 80,0 | 23,5 | 23,5 | 47,0 | 50 | 0,14 |
| G 3/8" | 26.3965.0.62 | 26.3965.0.62-FG | 44,4 | 10 | 37,0 | 80,0 | 24,0 | 24,0 | 47,0 | 50 | 0,14 |
| G 1/2" | 26.3962.0.63 | 26.3962.0.63-FG | 48,0 | 12 | 40,0 | 80,0 | 29,0 | 29,0 | 47,0 | 30 | 0,16 |
| G 3/4" | 26.3962.0.65 | 26.3962.0.65-FG | 53,0 | 12 | 54,0 | 113,0 | 36,0 | 36,0 | 62,0 | 30 | 0,25 |
| G 1" | 26.3962.0.67 | 26.3962.0.67-FG | 66,0 | 15 | 57,0 | 113,0 | 43,0 | 43,0 | 62,0 | 30 | 0,43 |
| G 1 1/4" | 26.3961.0.68 | 26.3961.0.68-FG | 76,0 | 16 | 73,0 | 138,0 | 53,0 | 53,0 | 70,0 | 25 | 0,63 |
| G 1 1/2" | 26.3961.0.69 | | 88,0 | 18 | 78,0 | 138,0 | 63,0 | 63,0 | | 25 | 0,96 |
| G 2" | 26.3960.0.71 | | 103,0 | 19 | 94,0 | 158,0 | 79,0 | 79,0 | | 25 | 1,53 |
| G 2 1/2" | 26.3960.0.72 | | 134,5 | 24 | 115,0 | 197,0 | 109,0 | 109,0 | | 18 | 2,95 |
| G 3" | 26.3960.0.73 | | 157,0 | 26 | 133,0 | 250,0 | 131,0 | 131,0 | | 16 | 5,60 |
| G 4" | 26.3960.0.75 | | 190,0 | 30 | 149,0 | 250,0 | 164,0 | 164,0 | | 14 | 8,20 |



| Nennweite | Artikel-Nr. | | Abmessungen / Gewichte | | | | | | | | | |
|-----------|--------------|-----------------|------------------------|---------|---------|--------|--------|---------|--------|--------|-----------------------|--------------|
| | Handhebel | Flügelgriff | L (mm) | LA (mm) | LI (mm) | H (mm) | C (mm) | SW (mm) | P (mm) | D (mm) | Druckstufe max. (bar) | Gewicht (kg) |
| G 1/4" | 26.3952.0.61 | 26.3952.0.61-FG | 54,0 | 10,5 | 10 | 37,0 | 80,0 | 23,5 | 23,5 | 47,0 | 50 | 0,14 |
| G 3/8" | 26.3952.0.62 | 26.3952.0.62-FG | 54,0 | 10,5 | 10 | 37,0 | 80,0 | 24,0 | 24,0 | 47,0 | 50 | 0,14 |
| G 1/2" | 26.3949.0.63 | 26.3949.0.63-FG | 58,0 | 11,5 | 12 | 40,0 | 80,0 | 29,0 | 29,0 | 47,0 | 30 | 0,16 |
| G 3/4" | 26.3949.0.65 | 26.3949.0.65-FG | 62,5 | 12,5 | 12 | 54,0 | 113,0 | 36,0 | 36,0 | 62,0 | 30 | 0,25 |
| G 1" | 26.3949.0.67 | 26.3949.0.67-FG | 75,0 | 14,5 | 15 | 57,0 | 113,0 | 43,0 | 43,0 | 62,0 | 30 | 0,43 |
| G 1 1/4" | 26.3948.0.68 | 26.3948.0.68-FG | 87,5 | 17,0 | 16 | 73,0 | 138,0 | 53,0 | 53,0 | 70,0 | 25 | 0,63 |
| G 1 1/2" | 26.3948.0.69 | | 100,5 | 19,0 | 18 | 78,0 | 138,0 | 63,0 | 63,0 | | 25 | 0,96 |
| G 2" | 26.3948.0.71 | | 115,5 | 21,0 | 19 | 94,0 | 158,0 | 79,0 | 79,0 | | 25 | 1,53 |

| | | | | | | | | | | | |
|-----------------------|-------------|-------------|-------------|-------------|-----------|---------------|---------------|-----------|---------------|-----------|-----------|
| Nennweite | 1/4" | 3/8" | 1/2" | 3/4" | 1" | 1 1/4" | 1 1/2" | 2" | 2 1/2" | 3" | 4" |
| Kugelbohrung Ø | 10 | 10 | 14 | 18,5 | 23,5 | 30 | 37 | 47 | 65 | 80 | 100 |
| KV-Wert | 3,45 | 5,00 | 14,65 | 23,46 | 38,67 | 56,07 | 86,60 | 160,5 | 348 | 390 | 725 |

415-MS_415_MS_I-A_2021_DE_Rev.0