

## 2/2-way solenoid valve, article 240-VA -pilot operated- diameter G 3/8“ up to G 2“

Pilot operated solenoid valves always require a pressure difference between the pilot and back pressure for actuation. The specified minimum pressure must always be present as a pressure difference ( $\Delta P$ ).

In the case of pilot operated valves, the magnetic coil opens a pilot hole. Supported by the differential pressure, the diaphragm rises from the valve seat. By default, these solenoid valves are designed with the function **-normally closed-**, by using mostly larger magnet coils the function **-normally open-** is also possible.

The flow direction is indicated by an arrow on the housing, the position of the solenoid valve coil should preferably be upright.

### Connection

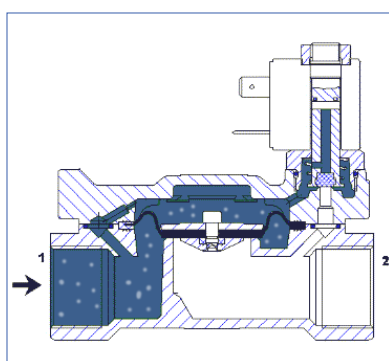
both sides female thread acc. to DIN ISO 228 (BSP)

Viscosity up to 22 mm<sup>2</sup>/s

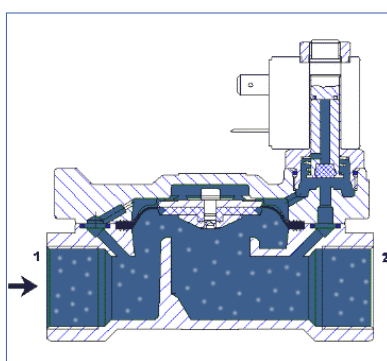
Solenoid valves should only be used with clean, liquid or gaseous media. For low contamination we recommend the use of an upstream strainer.



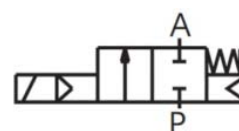
	ambient	max. +50°C
	diaphragm	medium temperature
	NBR:	-10°C ... +80°C
	EPDM:	-10°C ... +130°C
	FKM:	-10°C ... +120°C



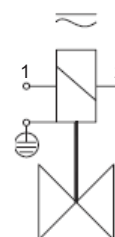
valve closed  
magnet coil currentless



valve opened  
magnet coil energized



Function:  
Normally closed - NC.



### Connection diagram:

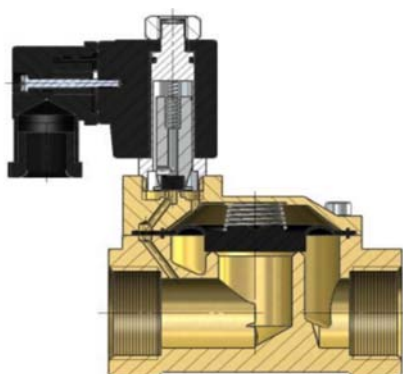
clamp: 1 (N) blue  
clamp: 2 (L) black/brown  
clamp: (PE) green/yellow

Grounding or protective circuit according to the regulations of the responsible EVU. Provide the fuse according to the current consumption.

- design : poppet valve with diaphragm sealing
- electrical part : plug socket acc. to DIN 175301-803, Form A
- cable passage : 6 – 8 mm, min. 0,34 mm<sup>2</sup>, max. 1,5 mm<sup>2</sup>
- supply voltage : 230V 50Hz AC voltage, 24V DC voltage
- voltage tolerance : +5% / -10%
- power consumption : AC voltage 230V 50Hz AC: 22 VA  
DC voltage 24V : 13 Watt
- duty-cycle : 100% ED-VDE 0580
- protection class : IP65 acc. to DIN 40050
- pressure range : see selection table

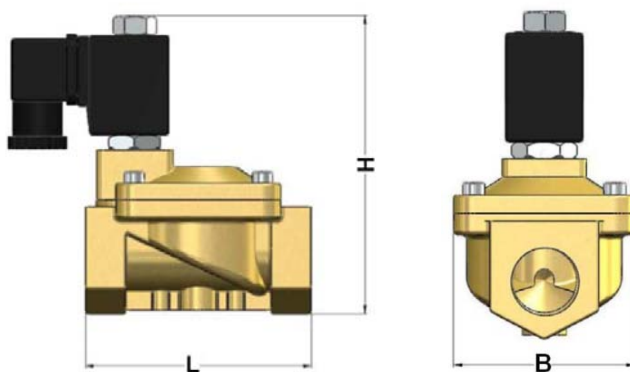
## 2/2-way solenoid valve, article 240-VA -pilot operated- diameter G 3/8" up to G 2"

description	material
body	stainless steel 1.4408
internal parts	stainless steel
diaphragm	EPDM (standard) optionally NBR, FKM



Valve options:	
angle bracket	
free of oil and grease	
manual operations	
special connection	NPT Flange (DN25 - DN100)
Ex-proof area II 2G Ex mII T4 II 3D IP65 T130°C	
special magnets	with strand (fully encapsulated) - IP67 special voltage
plug socket with LED	

diameter	L (mm)	H (mm)	B (mm)	Kv-value [m³/h]
G 3/8"	66	107	48	3,8
G 1/2"	66	107	48	3,8
G 3/4"	75	112	58	6,5
G 1"	96	131	70	10,3
G 1 1/4"	131	146	96	18,9
G 1 1/2"	131	146	96	25,8
G 2"	165	167	120	41,2



article numbers								
diameter	AC voltage 230 V / 1Ph power consumption 22 VA				DC voltage 24 V power consumption 13 Watt			
	normally closed	pressure range (bar)	normally open	pressure range (bar)	normally closed	pressure range (bar)	normally open	pressure range (bar)
G 3/8"	235.1102.6.62	0,5 - 16	235.1103.6.62	0,5 - 13	235.1104.6.62	0,5 - 16	235.1105.6.62	0,5 - 13
G 1/2"	235.1102.6.63		235.1103.6.63		235.1104.6.63		235.1105.6.63	
G 3/4"	235.1102.6.65		235.1103.6.65		235.1104.6.65		235.1105.6.65	
G 1"	235.1102.6.67		235.1103.6.67		235.1104.6.67		235.1105.6.67	
G 1 1/4"	235.1102.6.68		235.1103.6.68		235.1104.6.68		235.1105.6.68	
G 1 1/2"	235.1102.6.69		235.1103.6.69		235.1104.6.69		235.1105.6.69	
G 2"	235.1102.6.71		235.1103.6.71		235.1104.6.71		235.1105.6.71	

240-VA\_ENG\_2021\_Rev. 0