

2/2-way solenoid valve, article 240-MS -pilot operated- diameter G 3/8“ up to G 2“

Pilot operated solenoid valves always require a pressure difference between the pilot and back pressure for actuation. The specified minimum pressure must always be present as a pressure difference (ΔP).

In the case of pilot operated valves, the magnetic coil opens a pilot hole. Supported by the differential pressure, the diaphragm rises from the valve seat. By default, these solenoid valves are designed with the function **-normally closed-**, by using mostly larger magnet coils the function **-normally open-** is also possible.

The flow direction is indicated by an arrow on the housing, the position of the solenoid valve coil should preferably be upright.

Connection

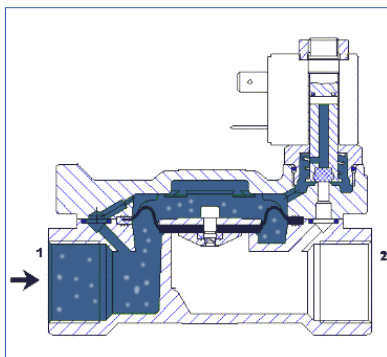
both sides female thread acc. to DIN ISO 228 (BSP)

Viscosity up to 22 mm²/s

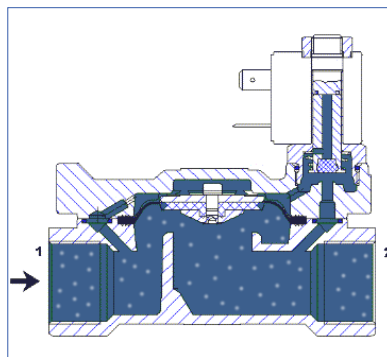
Solenoid valves should only be used with clean, liquid or gaseous media. For low contamination we recommend the use of an upstream strainer.



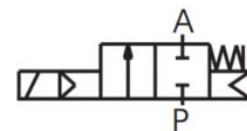
	ambient	max. +50°C
	diaphragm	medium temperature
	NBR:	-10°C ... +80°C
	EPDM:	-10°C ... +130°C
	FKM:	-10°C ... +120°C



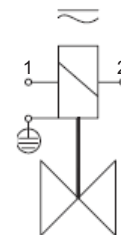
valve closed
magnet coil currentless



valve opened
magnet coil energized



Function:
Normally closed - NC.



connection diagram:

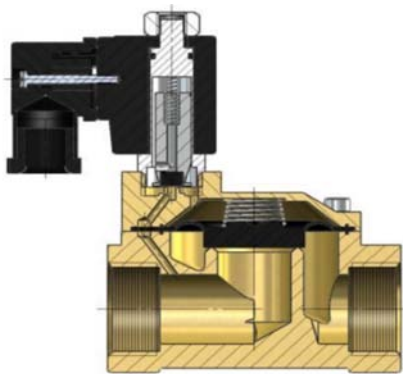
clamp: 1 (N) blue
clamp: 2 (L) black/brown
clamp: (PE) green/yellow

- design : poppet valve with diaphragm sealing
- electrical part : plug socket acc. to DIN 175301-803, Form A
- cable passage : 6 – 8 mm, min. 0,34 mm², max. 1,5 mm²
- supply voltage : 230V 50Hz AC voltage, 24V DC voltage
- voltage tolerance : +5% / -10%
- power consumption: AC voltage 230V 50Hz AC: 22 VA
DC voltage 24V : 13 Watt
- duty-cycle : 100% ED-VDE 0580
- protection class : IP65 acc. to DIN 40050
- pressure range : see selection table

Grounding or protective circuit according to the regulations of the responsible EVU. Provide the fuse according to the current consumption.

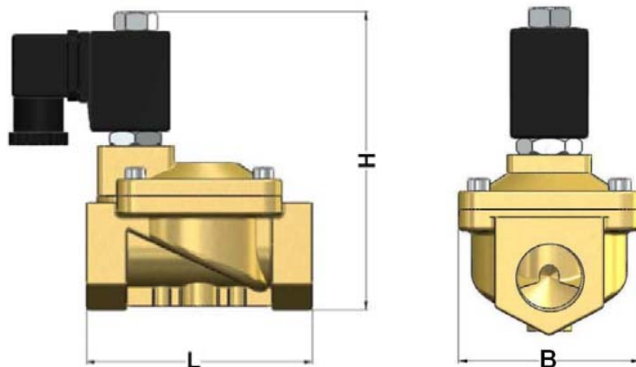
2/2-way solenoid valve, article 240-MS -pilot operated- diameter G 3/8" up to G 2"

description	material
body	brass
diaphragm	NBR (standard) optionally EPDM, FKM



Valve options:	
angle bracket	
free of oil and grease	
manual operations	
special connection	NPT Flange (DN25 - DN100)
Ex-proof area II 2G Ex mII T4 II 3D IP65 T130°C	
special magnets	with strand (fully encapsulated) - IP67 special voltage
plug socket with LED	

diameter	L (mm)	H (mm)	B (mm)	Kv-value [m³/h]
G 3/8"	66	107	48	3,8
G 1/2"	66	107	48	3,8
G 3/4"	75	112	58	6,5
G 1"	96	131	70	10,3
G 1 1/4"	131	146	96	18,9
G 1 1/2"	131	146	96	25,8
G 2"	165	167	120	41,2



article numbers								
diameter	AC voltage 230 V / 1Ph power consumption 22 VA				DC voltage 24 V power consumption 13 Watt			
	normally closed	pressure range (bar)	normally open	pressure range (bar)	normally closed	pressure range (bar)	normally open	pressure range (bar)
G 3/8"	235.1102.0.62	0,5 - 16	235.1103.0.62	0,5 - 13	235.1104.0.62	0,5 - 16	235.1105.0.62	0,5 - 13
G 1/2"	235.1102.0.63		235.1103.0.63		235.1104.0.63		235.1105.0.63	
G 3/4"	235.1102.0.65		235.1103.0.65		235.1104.0.65		235.1105.0.65	
G 1"	235.1102.0.67		235.1103.0.67		235.1104.0.67		235.1105.0.67	
G 1 1/4"	235.1102.0.68		235.1103.0.68		235.1104.0.68		235.1105.0.68	
G 1 1/2"	235.1102.0.69		235.1103.0.69		235.1104.0.69		235.1105.0.69	
G 2"	235.1102.0.71		235.1103.0.71		235.1104.0.71		235.1105.0.71	

240-MS_ENG_2021_Rev.0