

## 2/2-way solenoid valve, article 243-MS -force pilot operated- diameter G 3/8" up to G 2"

Force pilot operated solenoid valves start from 0 bar and do not require a pressure differential between the upstream and downstream pressure. In the case of force pilot operated valves the magnetic coil opens a pilot control bore, then the diaphragm directly lifts from the valve seat, or is supported by a differential pressure. By default, these solenoid valves are designed with the function **-normally closed-**, by using mostly larger magnet coils the function **-normally open-** is also possible. The flow direction is indicated by an arrow on the housing, the position of the solenoid valve coil should preferably be upright.

### Connections

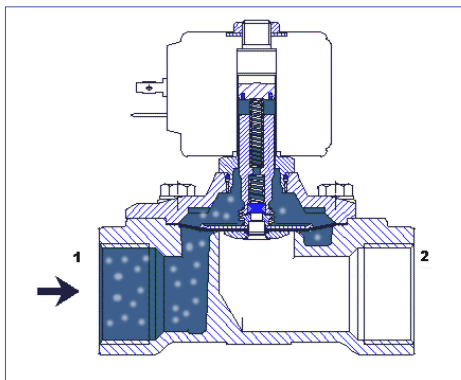
Both sides female thread acc. to DIN ISO 228 (BSP)

**Viscosity**  $\leq 20$  cSt (Centistoks)

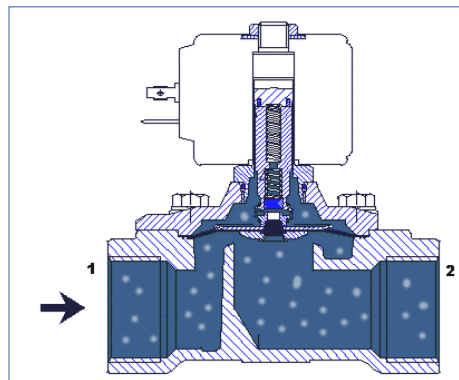
Solenoid valves should only be used with clean, liquid or gaseous media. For low contamination we recommend the use of an upstream strainer.



	ambient	to max. +50°C
	diaphragm	medium temperature
	NBR:	-10°C ... +80°C
	EPDM:	-10°C ... +130°C
	FKM:	-10°C ... +120°C

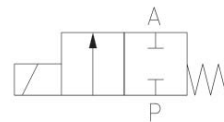


valve closed  
magnet coil currentless



valve opened  
magnet coil energized

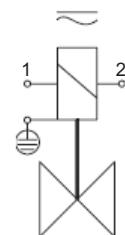
- design : poppet valve with diaphragm sealing
- electrical part : plug socket acc. to DIN EN 175301-803, Form A
- cable passage : 6 – 8 mm, min. 0,34 mm<sup>2</sup>, max. 1,5 m<sup>2</sup>
- supply voltage : 230V 50Hz AC voltage  
24V DC voltage
- voltage tolerance : +/- 10% acc. to VDE 0580
- duty-cycle : 100% ED
- protection class : IP65 with mounted plug socket
- mounting position : magnet preferably standing
- pressure range : see selection table





Schaltfunktion/Function:  
in Ruhstellung gesperrt - NC.  
normally closed - NC.

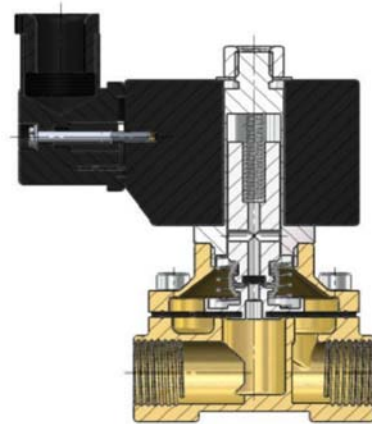
### Connection diagram:

- clamp: 1 (N) blue
- clamp: 2 (L) black/brown
- clamp: (PE) green/yellow

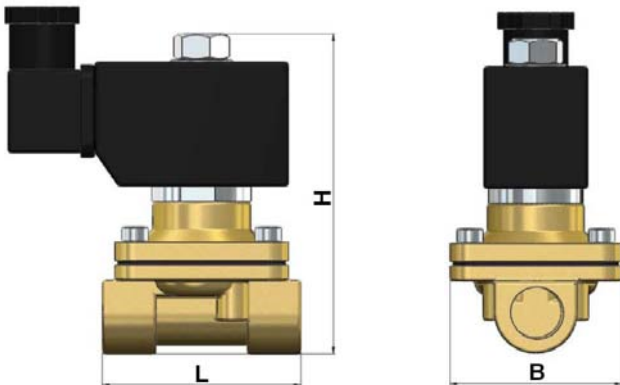


## 2/2-way solenoid valve, article 243-MS -force pilot operated- diameter G 3/8" up to G 2"

Valve options:	
higher pressure range	0 - 16 bar (to DN25)
normally open	0 - 7,0 bar
angle bracket	
free of oil and grease	
manual operations	
special connection	NPT Flange (DN25 - DN100)
Ex-proof area	II 2G Ex mII T4 II 3D IP65 T130°C 
special magnets	with strand (fully encapsulated) - IP67 special voltage, temperature class H
plug socket with LED	



description	material
body	brass
diaphragm	NBR (standard) optionally EPDM, FKM



diameter	L (mm)	H (mm)	B (mm)	Kv-value [m³/h]
G 3/8"	69	106	57	4,1
G 1/2"	69	106	57	4,1
G 3/4"	73	114	57	6,5
G 1"	99	121	77	10,2
G 1 1/4"	112	150	86,5	20,6
G 1 1/2"	1123	160	94	24,9
G 2"	160	183	123	41,2

article numbers								
diameter	AC voltage				DC voltage			
	normally closed	pressure range	normally open	pressure range	normally closed	pressure range	normally open	pressure range
	power consumption 230 V AC 20 VA		power consumption 230 V AC 33 W		power consumption 24 V DC 20 W		power consumption 24 V DC 20 VA	
G 3/8"	235.1106.0.62	0 - 10 bar	235.1107.0.62	0 - 7 bar	235.1108.0.62	0 - 8 bar	235.1109.0.62	0 - 7 bar
G 1/2"	235.1106.0.63		235.1107.0.63		235.1108.0.63		235.1109.0.63	
G 3/4"	235.1106.0.65		235.1107.0.65		235.1108.0.65		235.1109.0.65	
G 1"	235.1106.0.67		235.1107.0.67		235.1108.0.67		235.1109.0.67	
	power consumption 230 V AC 57 VA		power consumption 230 V AC 70 W		power consumption 24 V DC 45 W		power consumption 24 V DC 55 VA	
G 1 1/4"	235.1106.0.68	0 - 10 bar	235.1107.0.68	0 - 7 bar	235.1108.0.68	0 - 6 bar	235.1109.0.68	0 - 7 bar
G 1 1/2"	235.1106.0.69		235.1107.0.69		235.1108.0.69		235.1109.0.69	
G 2"	235.1106.0.71		235.1107.0.71		235.1108.0.71		235.1109.0.71	

243-MS\_ENG\_2022\_Rev. 01