

## Screwed end globe valve, article 100-VA

diameter G 1/2" up to G 2"

Globe valve made of stainless steel with screwed top and adjustable gland packing. Heavy duty series, pressure range PN 16.

**-metal sealing-** with throttling valve

Suitable for cold and hot water, wet steam, mineralized oils and lipids, as well as air and gaseous media.

☞ **Both sides with cylindrical female threads acc. to DIN/ISO 228-1**

The direction is indicated by an arrow.

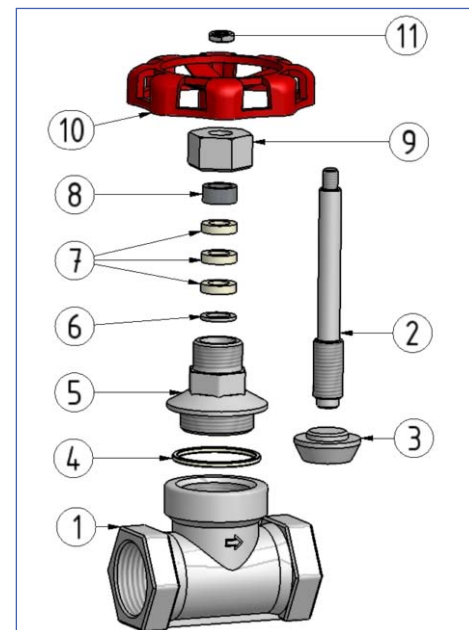


	ambient -25°C ... +110°C
	medium -20°C ... +160°C

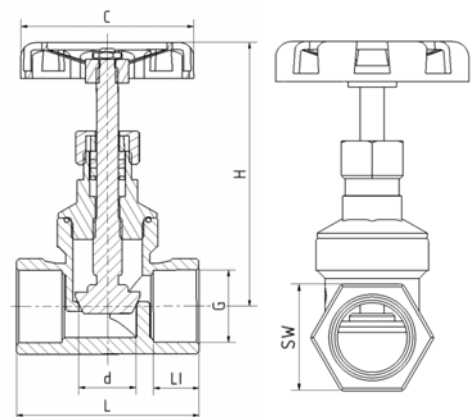
Before risk of frost empty the valve and ensure that the valve is depressurized. Freezing of the fluid may can seriously damage the valve.

### Article 100-VA

Pos.	description	material
1	body	stainless steel 1.4408
2	stem	stainless steel 1.4401
3	disc	stainless steel 1.4408
4	sealing	PTFE
5	bonnet	stainless steel 1.4408
6	washer	stainless steel 1.4301
7	packing	PTFE
8	gland ring	stainless steel 1.4301
9	cap nut	stainless steel 1.4401
10	hand wheel	die-cast aluminium, red
11	shaft nut	stainless steel 1.4301



diameter	article number	L (mm)	LI (mm)	d (mm)	H (mm)	C (mm)	SW (mm)	pressure rating (bar)	weight (kg)
	100-VA								
G 1/2"	22.0604.6.63	52	14	13,6	107,0	70	26	16	0,33
G 3/4"	22.0604.6.65	66	17	17,6	116,0	80	32	16	0,47
G 1"	22.0604.6.67	76	19	22,6	129,2	80	40	16	0,66
G 1 1/4"	22.0604.6.68	86	19	29,5	153,5	90	56	16	1,01
G 1 1/2"	22.0604.6.69	94	21	30,5	157,0	100	56	16	1,29
G 2"	22.0604.6.71	118	26	42,5	172,0	100	68	16	1,82



100-VA\_ENG\_2021\_Rev.0