

2/2-way solenoid valve, article 227-VA -force pilot operated- diameter DN 25 up to DN 100

Force pilot operated solenoid valves start from 0 bar and do not require a pressure differential between the upstream and downstream pressure. In the case of force pilot operated valves the magnetic coil opens a pilot control bore, then the diaphragm directly lifts from the valve seat, or is supported by a differential pressure. By default, these solenoid valves are executed with the function – **normally closed** –, by using mostly larger magnet coils the function – **normally open** – is also possible.

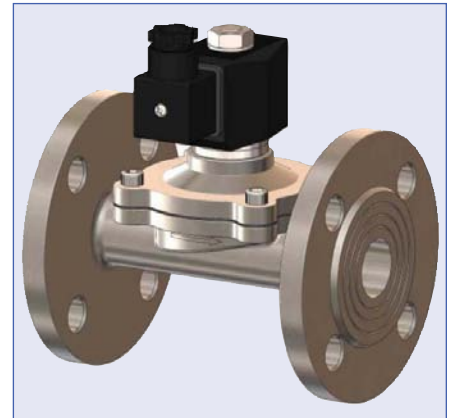
The flow direction is indicated by an arrow on the housing, the position of the solenoid valve coil should preferably be upright.

Connections

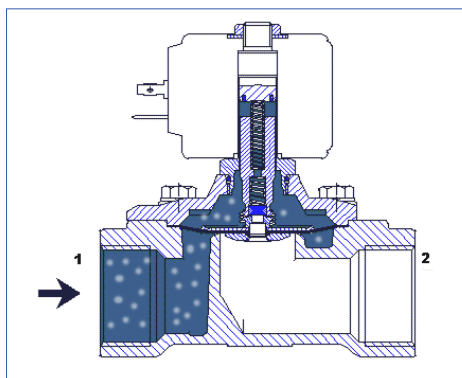
Both sides with flange acc. to DIN EN 1092-1, Form B PN 10 / PN 16

Viscosity ≤ 20 cSt (Centistoks)

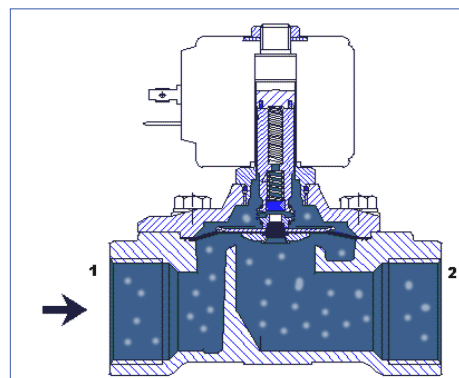
Solenoid valves should only be used with clean, liquid or gaseous media. For low contamination we recommend the use of an upstream strainer.



	ambient	to max. +50°C
	diaphragm	medium temperature
	NBR:	-10°C ... +80°C
	EPDM:	-10°C ... +130°C
	FKM:	-10°C ... +120°C

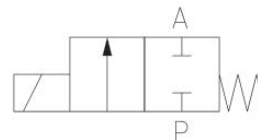


valve closed
magnet coil currentless



valve opened
magnet coil energized

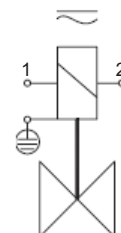
- design: poppet valve with diaphragm sealing
- electrical part: plug socket acc. to DIN EN 175301-803, Form A.
- cable passage: 6 - 8 mm, min. 0,34 mm², max. 1,5 mm²
- supply voltage: 230V 50Hz AC voltage, 24V DC voltage
- voltage tolerance : +/- 10% acc. to VDE 0580
- duty-cycle : 100% ED
- protection class : IP 65 with mounted plug socket
- mounting position : magnet preferably standing
- pressure range : see selection table



Schaltfunktion/Function:
in Ruhstellung gesperrt - NC.
normally closed - NC.

connection diagram:

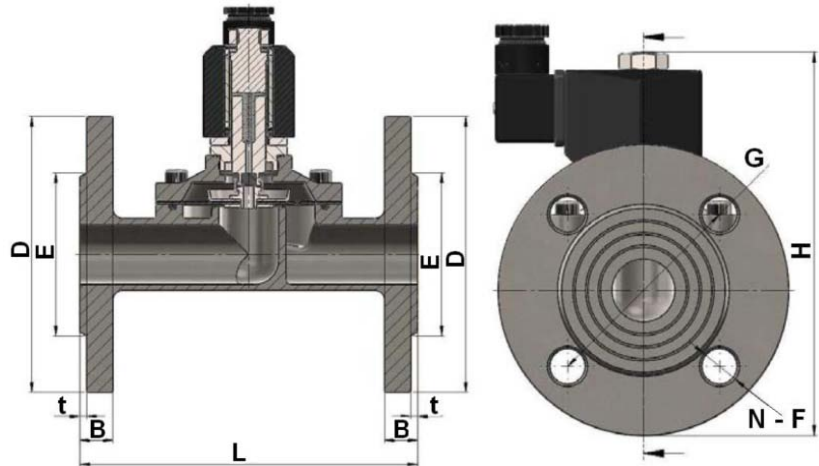
- clamp: 1 (N) blue
- clamp: 2 (L) black/brown
- clamp: \perp (PE) green/yellow



2/2-way solenoid valve, article 227-VA -force pilot operated- diameter DN 25 up to DN 100

Valve options:

- free of oil and grease
- special magnets with strand (fully encapsulated), special voltage, temperature class H
- plug socket with LED
- sealing: EPDM und FKM



description	material
body	stainless steel 1.4308
diaphragm	NBR (Standard) optionally EPDM, FKM

diameter	L (mm)	H (mm)	ØD (mm)	ØE (mm)	B (mm)	N - ØF (mm)	ØG (mm)	t (mm)	Kv-value [m³/h]	power consumption	
										VA	Watt
DN 25	140	160	115	62	14	4 - 14	85	2	10,2	33	20
DN 32	152	215	135	76	15	4 - 18	100	2	20,5	70	40
DN 40	152	215	145	84	15	4 - 18	110	2	24,7	70	40
DN 50	195	220	160	98	16	4 - 18	125	2	40,9	70	40
DN 65	250	308	185	118	19	4 - 18	145	3	64,0	55	64
DN 80	270	320	202	134	19	4 - 18	160	3	76,8	55	64
DN 100	342	345	222	162	21	8 - 18	180	3	136,5	55	64

order number										
diameter	AC voltage					DC voltage				
	normally closed	pressure range (bar)	normally open	pressure range (bar)	power consumption 230V AC	normally closed	pressure range (bar)	normally open	pressure range (bar)	power consumption 24V DC
DN 25	235.1118.5.15	0 - 10	235.1119.5.15	0 - 10	33 VA	235.1120.5.15	0 - 8	235.1121.5.15	0 - 8	20 Watt
DN 32	235.1118.5.18	0 - 10	235.1119.5.18	0 - 10	70 VA	235.1120.5.18	0 - 6	235.1121.5.18	0 - 6	40 Watt
DN 40	235.1118.5.19	0 - 10	235.1119.5.19	0 - 10	70 VA	235.1120.5.19	0 - 6	235.1121.5.19	0 - 6	40 Watt
DN 50	235.1118.5.21	0 - 10	235.1119.5.21	0 - 10	70 VA	235.1120.5.21	0 - 6	235.1121.5.21	0 - 6	40 Watt
DN 65	235.1118.5.24	0 - 6	235.1119.5.24	0 - 6	55 VA	235.1120.5.24	0 - 5	235.1121.5.24	0 - 5	64 Watt
DN 80	235.1118.5.25	0 - 6	235.1119.5.25	0 - 6	55 VA	235.1120.5.25	0 - 5	235.1121.5.25	0 - 5	64 Watt
DN 100	235.1118.5.27	0 - 6	235.1119.5.27	0 - 6	55 VA	235.1120.5.27	0 - 5	235.1121.5.27	0 - 5	64 Watt

227-VA_ENG_2017_Rev. 0